

ENGLISH

W



UNIVERSAL BRINELL UNIVERSAL BRINELL UNIVERSAL BRINELL UNIVERSAL BRINELL UNIVERSAL BRINELL

WOLPERT **W GROUP**

Wilson Instruments
An Instron Company

75 YEARS HARDNESS TESTING

WOLPERT GROUP

WOLPERT Group manufactures a comprehensive range of hardness testers for over 75 years. Our program covers Vickers, Knoop, Rockwell, Brinell, Shore and combined Universal models. Beside that, we offer any type of hardness reference blocks, accessories, and fixtures.

WOLPERT hardness products are predominantly used to determine the hardness of metals, alloys, small precision parts, wire, and plastics ranging from the softest bearing materials to the hardest steels. Main customer base is heat treat analysis and the automotive, aerospace, steel, and transportation equipment industries.

WOLPERT Group is the exclusive worldwide distribution partner for WILSON Instruments USA (an Instron Corporation), outside of the America's. The state-of-the-art closed loop Rockwell 2000 Series and Tukon 2100 Series for Vickers/Knoop, are being used every day around the world to determine the hardness of countless parts and materials.

Our Universal hardness testers are widely used for determining the hardness of various metal parts, bars or rods, coatings, and forgings.

We also offer software-based measurement packages designed to increase productivity, accuracy and efficiency.

All our hardness testers measure according to the relevant ISO standards.



INDEX - WOLPERT UNIVERSAL / BRINELL SELECTION GUIDE

	3000-BLD	3000-BLD/T	722- DiaTestor	751N DigiTestor	930/250N DigiTestor	971/750 DigiTestor	971/3000 DigiTestor	1010 ZoomTestor	1020 ZoomTestor	1040 ZoomTestor	1050 ZoomTestor	1070 ZoomTestor	1080 ZoomTestor
Brinell ISO 6506	■	■	■	■	■	■	■	■	■	■	■	■	■
Vickers ISO 6507			■	■	■	■	■	■	■	■	■	■	■
Rockwell ISO 6508			■	■	■	■	■		■	■	■	■	■
Knoop								□	■	■	■	■	■
Martens								□	□	□	□	□	□
Load range 1kg - 250kg					■			■	■				
Load range 3kg - 250kg (1kg)			■	■									
Load range 3kg - 750kg						■				■	■		
Load range 30kg - 3000kg							■					■	■
Load range 187,5kg - 3000kg	■	■											
Integrated Hardness calculator	■	■		■	■	■	■	■	■	■	■	■	■
Memory to store results				■	■	■	■	■	■	■	■	■	■
Hardness Conversion	■	■		■	■	■	■	■	■	■	■	■	■
Automatic load application	■	■			■	■	■	■	■	■	■	■	■
Motorized Spindle						□	□	□	□	□	□	□	□
Test height up to 280mm	■	■											
Test height up to 300mm			■	■	■			■	■	■	■		
Test height up to 350mm												■	■
Test height up to 700mm						■	■	□	□	□	□	□	□
Analogue scale			■										
Digital scale		■		■	■	■	■						
Video based scale									■	■	■	■	■
Magnification 20x			□	□	□	□	■	□	□	□	□	□	□
Magnification 44x			□	□	□	□	□	□	□	□	□	□	□
Magnification 70x			□	□	□	□	□	□	□	□	□	□	□
Magnification 140x			■	■	■	■	□	□	□	□	□	□	□
Magnification 250x			□	□	□	□	□	□	□	□	□	□	□
Zoom Objective								■	■	■	■	■	■
External Microscope	□	□											

■ standard
□ optional



BRINELL HARDNESS TESTER 3000BLD & 3000BLD/T™

Digital Brinell tester with motorized load cell, closed loop system

Sturdy, regular 30kN Brinell tester for the higher load Brinell scales (> 187.5kgf).
Rugged construction to withstand the harshest environments.
Accurate, reliable and durable tester at a very affordable price.
High rigidity and close loop loadcell technology to ensure accurate and safe load application.
External microscope with analogue reading to measure the diagonals.
Built in keypad calculator presents HB hardness value on display without mistakes.
Easy to use human interface to set up and operate the tester.
Clear menu displayed on a big LCD, statistics per test series, language setting.

The 3000-BLD/T also provides the Brinell depth scales, resulting in direct HBT readings on display.

TECHNICAL SPECIFICATIONS

Brinell scales	HBW 10/3000, HBW 10/1500, HBW 10/1000, HBW 10/500, HBW 10/250, HBW 10/100, HBW 5/750, HBW5/250, HBW 2.5/187.5
Model 3000-BLD/T	HBT and all above scales
Hardness resolution	0.1 unit if HB < 100; else 1.0 unit
Test loads(kgf)	187.5, 250, 500, 750, 1000, 1500, 3000
LCD display	Hardness HB value (after entering diagonal length into keypad calculator); Mean diagonal length; Test force; Dwell time; Ball diameter; Conversion; Limits
Test force application	Closed loop controlled load motor
Load duration	Adjustable application and dwell time 2 - 99 sec
Data-output	Thermal printer integrated and Bi-directional RS-232
Accuracy Conform	EN-ISO 6506 and JIS
Specimen accommodation	Vertical space 280mm (11") Horizontal space (from centre-line) 130mm (5")
Specimen access	External surfaces roughly grinded, Ra <21.6 µm
Power supply	110-220VAC, 50/60 Hz
Measuring microscope (optional)	Magnification 20X, resolution 50,0µm, range 7mm Magnification 40X, resolution 12,5µm, range 4mm Magnification 60X, resolution 12,5µm, range 2mm
Machine dimensions	Width 265mm, depth 608mm, height 1000mm
Machine weight	Ca. 250kg



Measuring microscope



Integrated thermal printer



BRINELL HARDNESS TESTER 3000BLD & 3000BLD/T™

Digital Brinell tester with motorized load cell, closed loop system

Accessories

Check with your WOLPERT agent for specified packages included with the hardness tester as standard delivery.

*Check latest accessories update on:
www.wolpertgroup.com*

Measuring microscopes with or without light source:
- 20X magnification, resolution 50,0 μm , range 7mm
- 40X magnification, resolution 12,5 μm , range 4mm
- 60X magnification, resolution 12,5 μm , range 2mm
Indenters Brinell with carbide ball 1 – 2,5 – 5 – 10mm
All indenters are certified DKD or UKAS or NIST
Spring-mounted clamping attachment,
to hold test parts during testing
Testing table diam 80mm
Testing table diam 235mm
V-anvil 1-4mm
V-anvil 3-10mm
V-anvil 7-20mm
V-anvil 15-45mm
V-anvil 20-60mm
V-anvil 60-150mm
Table with magnetic insert
Table with anvil for point support
Table with diamond for point support
Ball-mounted testing table diameter 80mm
Vice, opening 0-80mm
XY stage manual
XY stage manual, swivelling
Spindle protection tube
Steel cabinet with wooden table (for correct hardness
tester placement)
Dust protection cover Wolpert
Thermal printer
SPC Software (via RS-232 interface)
Object micrometer with test certificate
Hardness reference blocks with
DKD / UKAS / NIST / WOLPERT WORKS certificate



UNIVERSAL HARDNESS DIA-TESTOR 722 AND 751™

DIA-TESTOR 700 Series for Rockwell, Brinell and Vickers

Dead-weight universal hardness tester with very solid design Rockwell, Vickers and Brinell testing procedures combined. Automatic zeroing of the Rockwell dial gauge on model 722. Digital display readings on model 751.

Zeiss optical system with bright screen 135mm diameter ensures high precision measurements. Magnification by objective lenses from 20x to 140x (250x). Conforms to DIN-EN-ISO 6506,6507, 6508, ASTM and JIS. Simple test cycle by operation lever. Automatic swivel system of test axis between indenter and optics. Wide test load range up to 250kgf. Elevating spindle with precision guide bushing with high precision bearings which eliminate back-lash from the system.

TECHNICAL SPECIFICATIONS

	722 DiaTestor	751N DigiTestor
Hardness parameters	Brinell, Vickers, Rockwell	
Optics	High precision optics (Zeiss), screen diameter 135mm	
Objectives	Interchangeable 20x, 44x, 70x, 140x (250x) magnification	
Scale resolution	-	Incremental scale /better than 1 micron
Display	Dial gauge	Integrated hardness calculator, determination of hardness values for all procedures, statistics functions, data transfer
Standards	Conform to DIN-EN-ISO6506,6507, 6508, ASTM and JIS	
Test load type	Dead weight, load step adjustable	
Test cycle	Operation lever system	Operation lever system/Semi-Automatic
Test loads	Brinell 1* - 5 - 10 - 15,625 - 30 - 31,25 - 62,5 - 125 -187,5 - 250kg Vickers 1* - 3 - 5 - 10 - 20 - 30 - 40 - 50 -100 kg Rockwell 60 - 100 - 150 kg (10 kg Pre-load)	
Vickers test procedures	HV 1 - 2 - 3 - 5 - 10 - 20 - 30 - 50 - 100	
Brinell test procedures	HB1/: 1 - 2,5 - 5 - 10 - 30 HB2,5/: 6,25 - 15,625 - 31,25 - 62,5 - 187,5 HB5/: 31,25 - 62,5 - 125 - 250 HB10/: 100 - 250	
Rockwell test procedures	A - B - C - D - E - F - G - H - K - L - M - P - R - S	
Indenter types (optional)	Brinell Ball 1 - 2,5 - 5 - 10mm Vickers Diamond cone 136° Rockwell Diamond cone 120°, Ball 1/16" - 1/8" - 1/4" - 1/2"	
Load duration	Conform to ISO standards	
Data output	Non	RS-232
Specimen accommodation	Maximum test height 300mm, maximum throat 150mm	
Specimen access	External surfaces, Cylindrical surfaces down to 3mm diameter	
Power supply	220V / 50Hz (110V on request)	
Machine dimensions	Width 250mm, depth 537mm, height 1018mm	
Machine net weight	230kg	

UNIVERSAL HARDNESS **DIA-TESTOR 722 AND 751**™

DIA-TESTOR 700 Series for Rockwell, Brinell and Vickers

Accessories

Check with your WOLPERT agent for specified packages included with the hardness tester as standard delivery.

Check latest accessories update on: www.wolpertgroup.com

- Spring-mounted clamping attachment, to hold test parts during testing
- Objective 20x magnification
- Objective 44x magnification
- Objective 70x magnification
- Objective 140x magnification (standard)
- Objective 250x magnification
- Indenter Rockwell diamond
- Indenter Rockwell with carbide or steel ball 1/16" - 1/8" - 1/4"
- Indenter Brinell with carbide ball 1 - 2,5 - 5 - 10mm
- Indenter Vickers diamond
- Testing table diam 80mm
- Testing table diam 235mm
- V-anvil 1-4mm
- V-anvil 3-10mm
- V-anvil 7-20mm
- V-anvil 15-45mm
- V-anvil 20-60mm
- V-anvil 60-150mm
- Table with magnetic insert
- Table with anvil for point support
- Table with diamond for point support
- Ball-mounted testing table diameter 80mm
- Vice, opening 0-80mm
- XY stage manual
- XY stage manual, swivelling
- Blind shield (to improve visibility of optical reading)
- Halogen lamp 12V, 50W
- Spindle protection tube
- Steel cabinet with wooden table
- Device for vibration-damped erection
- Dust protection cover
- Printer including data-cable
- Printer paper roll
- Printer cable
- SPC Software via RS-232
- Interface cable for pc
- Object micrometer with test certificate
- Hardness reference blocks with DKD / UKAS / NIST / WOLPERT WORKS certificate



Blind shield, to improve visibility of optical reading



DIA-TESTOR 751™



DIA-TESTOR 722™

UNIVERSAL HARDNESS DIGI-TESTOR 930/250N™

Motorized tester with digital display for Rockwell, Brinell and Vickers

The new enlarged (100x75mm) user friendly TESTOR® PANEL shows hardness values for all hardness test procedures. New user friendly software. 99 different test programs for all hardness scales. Very user-friendly because of a high degree of automation and low training requirements, such as setting up test programs with preset test parameters, easy access to all testing programs. Shape correction according to ISO standards. Possibility to store 20 Batch files with 50 measuring results each. Rockwell, Vickers and Brinell testing procedures combined in one machine. Zeiss optical system with bright screen 135mm diameter ensures high precision measurements. Magnification by objective lenses from 20x to 140x. Conforms to DIN-EN-ISO 6506,6507, 6508, ASTM and JIS. Automatic swivel system of test axis between indenter and optics. Wide test load range up to 250kgf. High quality elevating spindle with precision guide bushing to eliminate back-lash. RS232 serial data output interface. High-tech closed loop system to eliminate overshoot. Fully automatic controlled test cycle. Provides Superficial Rockwell scales as well.

TECHNICAL SPECIFICATIONS

930/250N DigiTestor

Hardness scales	Brinell, Vickers, Rockwell, Super-Rockwell, Brinell depth, Vickers depth
Optics	High precision optics, screen diameter 135mm
Objectives	Interchangeable 20x - 44x - 70x - 140x - magnification
Scale resolution	Incremental scale / better than 1 micron
Display	Integrated hardness calculator, determination of hardness values for all procedures, statistics functions, data transfer
Standards Conform to	DIN-EN-ISO6506, 6507, 6508, ASTM and JIS
Test load type	Closed loop control system
Test cycle	Automatic
Test loads	Brinell 1* - 5 - 10 - 15,625 - 30 - 31,25 - 62,5 - 125 - 187,5 - 250 kg Vickers 1* - 3* - 5 - 10 - 20 - 30 - 40 - 50 - 100 kg Rockwell 15 - 30 - 45 - 60 - 100 - 150 kg (3 & 10 kg pre-load)
Vickers test procedures	HV and HVT 1 - 2 - 3 - 5 - 10 - 20 - 30 - 50 - 100
Brinell test procedures	HB1/: 1 - 2,5 - 5 - 10 - 30 HB2,5/: 6,25 - 15,625 - 31,25 - 62,5 - 187,5 HB5/: 31,25 - 62,5 - 125 - 250 HB10/: 100 - 250 HBT2,5/: 62,5 - 187,5 HBT5/250
Rockwell test procedures	A - B - C - D - E - F - G - H - K - L - M - P - R - S - V - Bm - Fm - Ralpha 15N - 30N - 45N - 15T - 30T - 45T - 15W - 30W - 45W - 15X - 30X 45X - 15Y - 30Y - 45Y - 30 TM - HMR 5/25
Indenter types optional	Brinell Ball 1 - 2.5 - 5 - 10mm Vickers Diamond cone 136° Rockwell Diamond cone 120°, Ball 1/16" - 1/8" - 1/4" - 1/2"
Load duration	0,1- 255 sec
Data output	RS232 serial interface (to printer or pc)
Specimen accommodation	Maximum test height 300mm, maximum throat 150mm
Specimen access	External surfaces,
Cylindrica lsurfaces	Down to 3mm diameter
Power supply	220V / 50Hz (110V on request)
Machine dimensions	Width 250mm, depth 567mm, height 1018mm
Machine net weight	200kg

UNIVERSAL HARDNESS DIGI-TESTOR 930/250N™

Motorized tester with digital display for Rockwell, Brinell and Vickers

Accessories

Check with your WOLPERT agent for specified packages included with the hardness tester as standard delivery.

Check latest accessories update on: www.wolpertgroup.com

Spring-mounted clamping attachment to hold test parts during testing

Objective 20x magnification

Objective 44x magnification

Objective 70x magnification

Objective 140x magnification (standard)

Objective 250x magnification

Indenter Rockwell diamond

Indenter Rockwell with carbide or steel ball 1/16" - 1/8" - 1/4"

Indenter Brinell with carbide ball 1 - 2,5 - 5 - 10mm

Indenter Vickers diamond

Testing table diam 80mm

Testing table diam 235mm

V-anvil 1-4mm

V-anvil 3-10mm

V-anvil 7-20mm

V-anvil 15-45mm

V-anvil 20-60mm

V-anvil 60-150mm

Table with magnetic insert

Table with anvil for point support

Table with diamond for point support

Ball-mounted testing table diameter 80mm

Vice, opening 0-80mm

XY stage manual

XY stage manual, swivelling

Blind shield (to improve visibility of optical reading)

Halogen lamp 12V, 50W

Spindle protection tube

Steel cabinet with wooden table

Device for vibration-damped erection

Dust protection cover

Thermal printer including data-cable

Printer paper rolls

Printer cable

SPC Software via RS-232

Interface cable for pc

Object micrometer with test certificate

Hardness reference blocks with certificate

DKD / UKAS / NIST / WOLPERT WORKS



Motorized tester 3000kgf with digital display for Rockwell, Brinell and Vickers

A comprehensive range of hardness testing procedures offered by one machine: Rockwell, Vickers, Vickers depth, Brinell and Brinell depth. Extremely short test cycle without overshoot thanks to the closed loop system.

Very user-friendly because of a high degree of automation and low training requirements, such as setting up test programs with preset test parameters. The TESTOR® PANEL determines and digitally displays hardness values for all hardness test procedures. A large number of additional functions are provided such as conversions, timing, tolerances, corrections for cylindrical surfaces, statistical values. Direct printer and/or PC connection possible by RS232.

Solid design resulting in high precision readings satisfies all testing standards (i.e. the machine can be used for ruling and acceptance tests). Tables for depth measurement internally generated, thus adaptable to all materials.

TECHNICAL SPECIFICATIONS

Hardness scales	Brinell, Vickers, Rockwell
Optics	High precision optics, screen diameter 135mm
Objectives	Interchangeable 20x (standard), 44x - 70x - 140x magnification
Scale resolution	Incremental scale / better than 1 micron
Display	Integrated hardness calculator, determination of hardness values for all procedures, statistics functions, data transfer
Standards Conform to	DIN-EN-ISO6506,6507, 6508, ASTM and JIS
Test loadtype	Closed loop control system
Test cycle	Automatic
Test load range	30 - 3000kgf
Vickers scales HV &HVT	HV30 - HV 50 - HV100
Brinell scales HB & HBT	HB1/:30 - HB2,5/31,25 - HB2,5/62,5 - HB2,5/187,5 HB5/25 - HB5/62,5 - HB5/125 - HB5/250 - HB5/750 HB10/100 - HB10/250 - HB10/500 - HB10/1000 - HB10/1500 - HB3000 HBT2,5/62,5 - HBT2,5/187,5 HBT5/250 - HBT5/750 HBT10/500 - HBT10/1000 - HBT10/1500 - HBT10/3000
Rockwell scales	A - B - C - D - E - F - G - H - K - L - M - P - R - S - (60 - 100 - 150 kg) V - Bm - Fm - Ra - HMR
Indenter types (optional)	Brinell Ball 1 - 2.5 - 5 - 10mm Vickers Diamond cone 136° Rockwell Diamond cone 120°, Ball 1/16" - 1/8" - 1/4" - 1/2"
Load duration	0.1 - 255 sec
Data output	RS232 serial interface (to printer or pc)
Specimen accommodation	Maximum test height 700mm, maximum throat 300mm
Specimen access	External surfaces, Cylindrical surfaces down to 3mm diameter
Power supply	220V / 50Hz (110V on request)
Machine dimensions	Width 465mm, depth 1125mm, height 1929mm
Machine net weight	710kg (motorised version net weight 800kg)

On special request the 971/750 is available, with a load range of 5 – 750kgf

UNIVERSAL HARDNESS DIGI-TESTOR 971N™

Motorized tester 3000kgf with digital display for Rockwell, Brinell and Vickers

Accessories

Check with your WOLPERT agent for specified packages included with the hardness tester as standard delivery.

*Check latest accessories update on:
www.wolpertgroup.com*

Spring-mounted clamping attachment to hold test parts during testing

Objective 20x magnification

Objective 44x magnification

Objective 70x magnification

Objective 140x magnification (standard)

Objective 250x magnification

Indenter Rockwell diamond

Indenter Rockwell with carbide or steel ball 1/16" - 1/8" - 1/4"

Indenter Brinell with carbide ball 1 - 2,5 - 5 - 10mm

Indenter Vickers diamond

Testing table diam 80mm

Testing table diam 235mm

V-anvil 1-4mm

V-anvil 3-10mm

V-anvil 7-20mm

V-anvil 15-45mm

V-anvil 20-60mm

V-anvil 60-150mm

Table with magnetic insert

Table with anvil for point support

Table with diamond for point support

Ball-mounted testing table diameter 80mm

Vice, opening 0-80mm

XY stage manual

XY stage manual, swivelling

Blind shield (to improve visibility of optical reading)

Halogen lamp 12V, 50W

Spindle protection tube

Steel cabinet with wooden table (for correct hardness tester placement)

Device for vibration-damped erection

Dust protection cover

Thermal printer including data-cable

Printer paper rolls

Printer cable

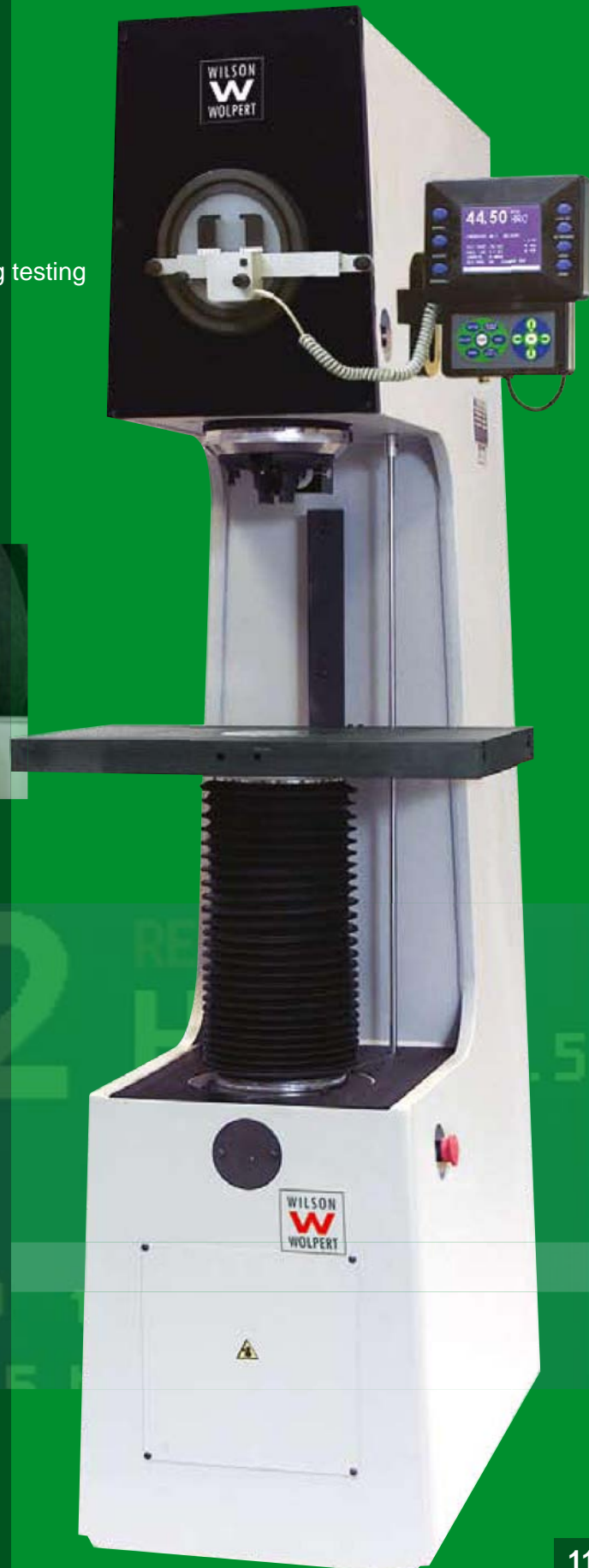
SPC Software via RS-232

Interface cable for pc

Object micrometer with test certificate

Hardness reference blocks with

DKD / UKAS / NIST / WOLPERT WORKS certificate



Wolpert universal hardness tester Series 971 featuring motorised spindle with large testing table 400x600mm

UNIVERSAL HARDNESS ZOOM-TESTOR 1000 SERIES™

Motorized closed loop system with internal video camera and zoom objective

Stable and high precision machine for all applications Vickers, Brinell, Rockwell, Ball Indentation Hardness etc. Motorized controlled load application and optical evaluation via integrated video imaging system. Big LCD colour display. 7-step zoom objective - simply amazing. All information on one displayed page only. 200 pre programmable test definitions. Extremely powerful and incredibly easy to use. Customized software applications available.

		1010	1020	1040	1050	1070	1080
Load	1-250kgf	■	■				
Load	3-750kgf			■	■		
Load	30-3000kgf					■	■
Brinell	ISO6506	■	■	■	■	■	■
Vickers	ISO6507	■	■	■	■	■	■
Rockwell	ISO6508		■		■		■
Brinell depth	HBT		■		■		■
Vickers depth	HVT		■		■		■
Ball indentation hardness	ISO2039T1		■		■		■
Motor zoom	1:7	■	■	■	■	■	■
Test height	300mm	■	■	■	■		
Test height	350mm					■	■
Throat depth	250mm	■	■	■	■	■	■

Hardness scales	Brinell, Brinell depth, Vickers, Vickers depth, Knoop, Rockwell, Superficial Rockwell, Ball indentation hardness.
Standards Conform to	DIN-EN-ISO 6506,6507, 6508, ASTM and JIS and ISO 2039-1
Test loads	Brinell 1 - 3000 kg (see above table for models) Vickers/Knoop 1- 100 kg (see above table for models) Rockwell 15- 30- 45- 60- 100- 150 kg (see above table for models) Macro-Rockwell (HMR) - HMR5/250 Vickers Depth Measurement HVT 30 - 10 Brinell Depth Measurement HBT 2,5/62,5 - 2,5/187,5 - 5/250
Indenter types optional	Brinell Ball 1 - 2,5 - 5 - 10mm Vickers Diamond cone 136° Rockwell Diamond cone 120°, Ball 1/16" - 1/8" - 1/4" - 1/2"
Optics	10-step zoom objective, range 55x – 352x
Objectives	Interchangeable 2,5x - 4x - 10x - 20x - total range 28x - 1798x
Scale resolution	better than 1 micron
Display	Advanced graphical display, Integrated hardness calculator, determination of hardness values for all procedures, statistics functions, data transfer
Illumination	Infinity adjustable brightness of light
Test load application	Electromotor closed-loop system, with load cell
Test Load selection	Automatic, via programmable digital panel
Load duration	0.1- 25 sec
Data output	RS232 (bidirectional) serial interface to pc, Parallel port to Printer
Specimen accommodation	Maximum test height 310mm (350mm) , maximum throat 250mm
Specimen access	External surfaces, cylindrical surfaces down to 3mm diameter
Power supply	230V, 50Hz (50VA) (110V on request)
Machine dimensions	Width 230mm, depth 725mm, height 1200mm Width 390mm, depth 920mm, height 1290mm for 1070 & 1080
Machine net weight	App. 160kg (190kg for 1070 & 1080)



UNIVERSAL HARDNESS ZOOM-TESTOR 1000 SERIES™

Motorized closed loop system with internal video camera and zoom objective

Accessories

Check with your WOLPERT agent for specified packages included with the hardness tester as standard delivery.

Check latest accessories update on: www.wolpertgroup.com

- Motorised spindle (all models)
- Hardwin Basic SPC software
- Hardwin EHT/RHT hardness depth software
- Extended load step for all models
- Printer inkjet with cable
- X/Y stage manual 120x120mm
- Motorised X/Y stage 200x200mm
- Revolver head for 2 objectives and 4 indenters
- Full automatic hardness determination software, by image processing
- Ring light for improved low hardness readings
- Objective 10x (optional for up to 1000kgf)
- Objective 2.5x (standard for models 1070/1080)
- Objective 20x (option for up to 30kgf)
- Objective 4x (standard for models 1010/1020/1040/1050)
- Indenter shaft adapter diameter 6.35 to 8mm
- Brinell indenters with carbide ball 1 - 2.5 - 5.0 - 10mm
- Rockwell diamond indenter
- Rockwell indenter with carbide ball 1/16" - 1/4" - 1/8"
- Vickers indenter for macro or micro loads
- Knoop indenter
- V-anvil 1-4mm
- V-anvil 3-10mm
- V-anvil 7-20mm
- V-anvil 20-60mm
- V-anvil 50-150mm
- V-anvil 150-300mm
- V-anvil 300-500mm
- Testing table 400x600mm
- Cup anvil with 10mm support
- Cup anvil with 10mm with V-shape support
- Spot anvil 10mm
- Testing table diameter 235mm; screw mount
- Testing table 250x400mm with vice
- Testing table diameter 325mm; screw mount
- Testing table diameter 80mm swivel ball
- Testing table diameter 80mm
- Testing table with diamond inlay
- Clamping device large or small
- Test height accommodation length decreased height option
- Test extended height option for 250kgf tester to 560mm
- Test extended height option for 3000kgf tester to 700mm
- Test extended height option for 3000kgf tester to 800mm
- Dust cover for ZoomTestor
- Cabinet worktable heavy duty



HARDNESS ACCESSORIES

Selection of anvils for correct hardness testing

Every hardness tester can be equipped with a range of exchangeable testing tables and anvils. The tables are flat or V-shaped, to accommodate parts of different shapes and diameter. Below is shown our extended range of different tables, V-anvils and pedestal spot anvils.

To keep the test specimen stationary and provide support, always use the smallest anvil possible. When using test blocks, a pedestal spot anvil is recommended. Always insure that the anvil's top surface and its supporting contact surface are free of dirt, grindings, oil or corrosion. If the indenter or other object has left a mark on the anvil test surface or seat, the anvil will cause false readings and should be replaced.

Anvil for point support, to support small parts and sheet metal
Cup anvil for point support, to support hollow parts

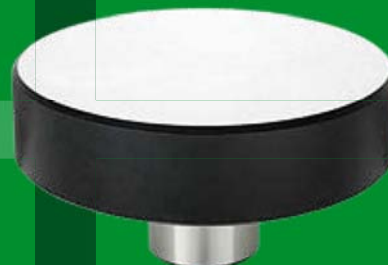


V-anvils in various sizes for round specimens

- V-anvil 1-4mm
- V-anvil 3-10mm
- V-anvil 7-20mm
- V-anvil 15-45mm
- V-anvil 20-60mm
- V-anvil 60-150mm



Testing table Ø 235mm, to support large specimens



INDENTERS FOR VICKERS, BRINELL & ROCKWELL

With official calibration certificates UKAS, DKD or NIST NVLAP (ASTM)

WOLPERT Group offers a wide range of indenters.

All certified indenters are issued with a certificate traceable to internationally recognised standards such as UKAS, DKD or ASTM. We also offer economic factory certified indenters and specials.

Indenter type WILSON - WOLPERT UKAS DKD ASTM

Rockwell type 120° diamond cone

Carbide or Steel Rockwell ball indenter - 1/16" dia.

Carbide or Steel Rockwell ball indenter - 1/8" dia.

Carbide or Steel Rockwell ball indenter - 1/4" dia.

Carbide or Steel Rockwell ball indenter - 1/2" dia.

Brinell Carbide ball indenter - 1mm dia.

Brinell Carbide ball indenter - 2mm dia.

Brinell Carbide ball indenter - 2.5mm dia.

Brinell Carbide ball indenter - 5mm dia.

Brinell Carbide ball indenter - 10mm dia.

Vickers Pyramid 136°

Micro Vickers Pyramid 136°

Knoop Pyramid 172°



HARDNESS REFERENCE BLOCKS FOR VICKERS, BRINELL & ROCKWELL

With official calibration certificates UKAS, DKD or NIST (ASTM)

WILSON and WOLPERT hardness reference blocks are used for annual verification and calibration of hardness testing machines, as well as for periodical check and sometimes for overtaking of hardness scales on a hardness testing machine. That's why hardness reference blocks are a necessary help of industrial Quality Management. Only the use of high quality, precise hardness reference blocks calibrated to applicable standards can ensure the functionality and relative reliability and accuracy of measurement of a hardness testing machine.

All hardness reference block certificates are based on following international standards:

Brinell	DIN-EN-ISO 6506-3, ASTM E 10
Vickers	DIN-EN-ISO 6507-3, ASTM E 92 / E 384
Rockwell	DIN-EN-ISO 6508-3, ASTM E 18
Knoop	ISO 4545-3, ASTM E 384
Rockwell carbide	DIN30999, ISO 3738
Martens hardness	DIN50359, ISO DIS 14577

WOLPERT Group certified hardness reference blocks are available with the following certificates, and all conform to the international standards as mentioned above.

UKAS - DKD - DKD/MPA - ASTM - WOLPERT

Order your blocks based on nominal values. Please ask for our separate product list of nominal hardness values available per hardness scale and type of certificate.

Check our block overview at www.wolpertgroup.com





ROCKWELL

ROCKWELL ROCKWELL ROCKWELL ROCKWELL ROCKWELL ROCKWELL ROCKWELL ROCKWELL ROCKWELL ROCKWELL

WOLPERT W GROUP
Wilson Instruments
75 YEARS HARDNESS TESTING



VICKERS KNOOP

VICKERS KNOOP VICKERS KNOOP VICKERS KNOOP VICKERS KNOOP VICKERS KNOOP VICKERS KNOOP VICKERS KNOOP VICKERS

WOLPERT W GROUP
75 YEARS HARDNESS TESTING



UNIVERSAL BRINELL UNIVERSAL BRINELL UNIVERSAL BRINELL UNIVERSAL BRINELL UNIVERSAL BRINELL

WOLPERT W GROUP

WWW.WOLPERTGROUP.COM